

TOOLS & SUPPLIES

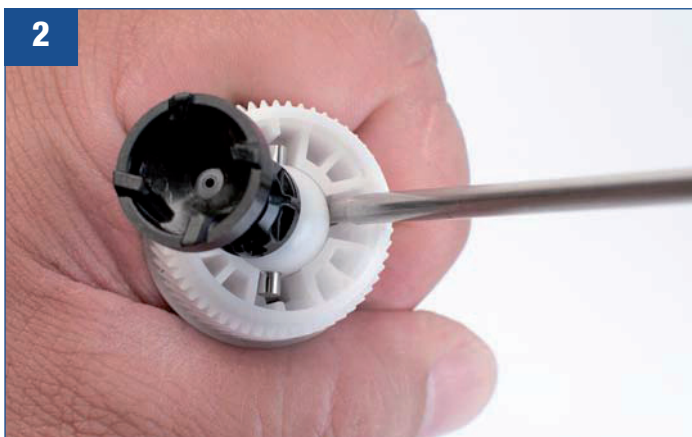
- Obtain an OEM OPC with the drive gear in place
- Flathead screwdriver with #1 bit
- HP2055/HP3015 Drive axle engaging tool (Article # 61077)



STEP 1: Obtain a spent cartridge with the OEM drive axle still attached. Disassemble the old cartridge per the remanufacturing guide and pick up the OEM OPC. Do not touch the metal shaft of the drive axle until it has been dislodged from the OPC gear (**See photo 1**).



STEP 2: Firmly grasp the OPC and place the blade of the screwdriver under the white, plastic hub until the axle is free from the PC gear. The force required to dislodge the axle from the gear is substantial and may result in a launch of the axle, so make sure you have a box positioned to safely catch the axle (**See photo 2**).

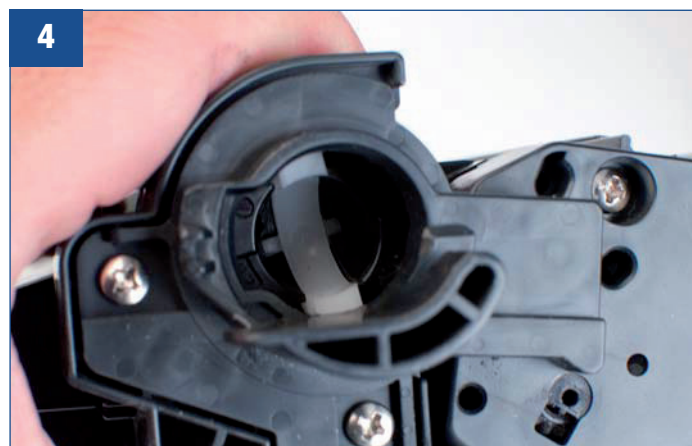


Set the drive axle to the side (**See photo 3**). Attaching it to the newly built cartridge will be the final step in the remanufacturing process.



STEP 3: Following the instructions in the HP3015 Remanufacturing Guide to fully rebuild the cartridge.

STEP 4: Once the cartridge has been built with the new OPC for the HP P3015, Article #19607, hold the cartridge in an upright, vertical orientation. This will stabilize the cradle in preparation for the attachment of the drive axle (**See photo 4**).



The following pictures will merely illustrate how the drive axle interacts with the gear of the OPC for HP P3015 (Article #19607). The final step will be to use the Drum Axle Tool (Article #61077) to attach the OEM drive axle to the gear of the OPC for HP P3015 (Article #19607) (*See photos 5-10*).

To illustrate the union of the drive axle to the cradle of the gear, the gear has been removed from the drum and the cradle has been removed from the gear (*See photos 5*).



The receiving ports of the cradle are opposite-facing (*See photo 6*), which will allow the axle to be gently twisted into the gear (*See photos 7 & 8*).



(*Photo 9*) shows how to safely and correctly hold the Drum Axle Tool (Article #61077) and the axle.



With the cradle attached to the gear, (*Photo 10*) shows how the Drum Axle Tool (Article #61077) is used to position the axle into the receiving ports of the cradle.



ALIGNMENT OF THE DRIVE AXLE ENGAGING TOOL

Using the Drive axle engaging tool, line the metal protrusions at the end of the shaft into the slots on the metal end of the drive axle (*See photos 11-13*).



STEP 5: With the cartridge fully rebuilt, gently slide the axle into the receiving ports of the OPC for HP P3015 (Article #19607) gear and apply a slight turn counterclockwise until the gear unlocks into place. By holding the newly built cartridge in an upright, vertical orientation, it takes very little effort to secure the axle into the new gear (*See photos 14 & 15*).

