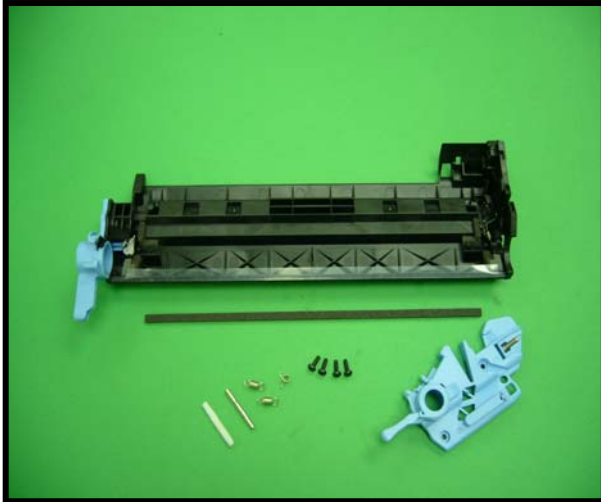
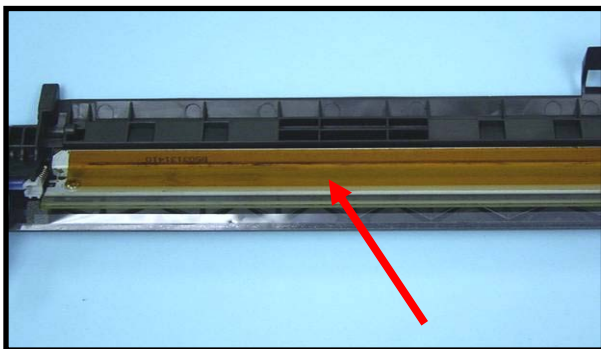


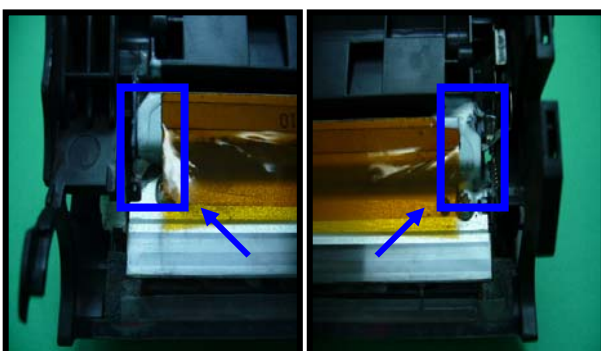
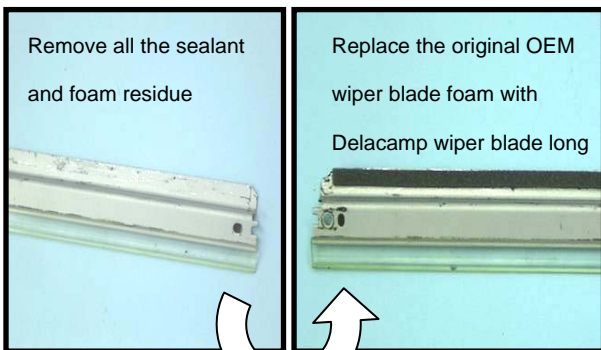
## Delacamp HP2600 Waste Section Kit Installation Instructions



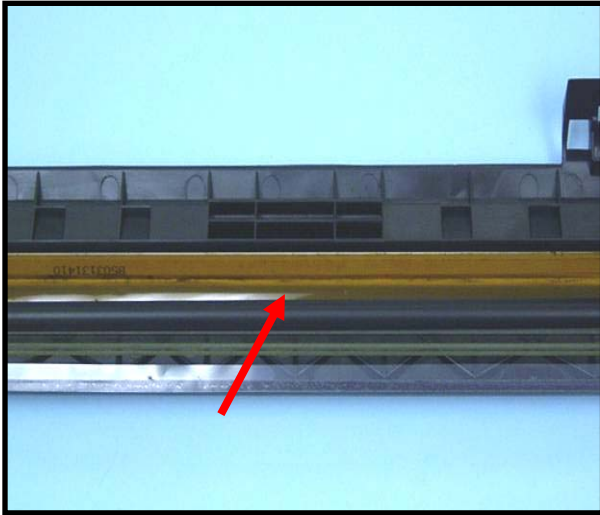
1. The Delacamp Kit includes a Waste Section base, Left/Right Cartridge End Caps, Plastic Pivot Pin, Metal Pivot Pin, two pieces of Hopper Tension Spring, OPC Drum Shutter Spring, cartridge end cap mounting screws and Wiper Blade Sealing Foam. The PCR saddles & springs, Left Cartridge End Cap, recovery blade and sealing foam are pre-installed.



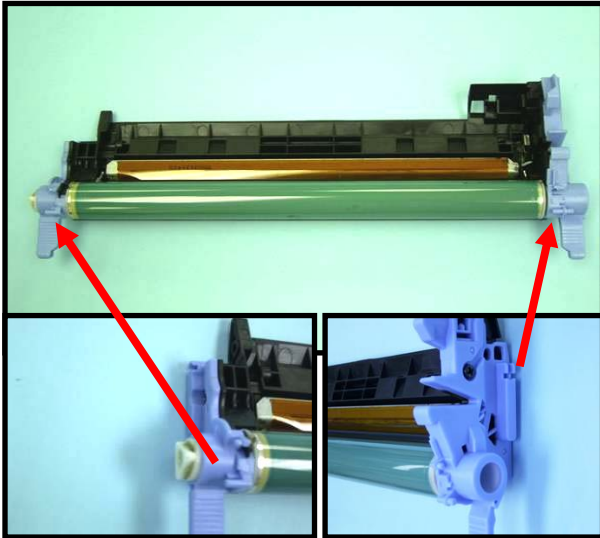
2. Fit the wiper blade on the Waste Section horizontally and screw in place. If you are using the old wiper blade from an OEM cartridge, please make sure all the sealant residue on the blade is removed before assembly, otherwise it may cause toner leakage. In addition, please make sure the long wiper blade sealing foam is not damaged. The Delacamp Waste Section Kit includes a spare long wiper blade sealing foam. We suggest to remove the original wiper blade foam on the OEM wiper blade and replace with the new foam.



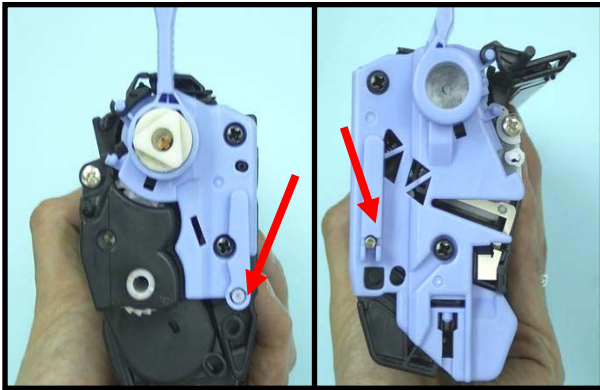
3. The Delacamp Waste Section is already fitted with a sealing foam so that re-manufacturers do not need to add extra silicon sealant for sealing like the OEM. However, if you are using an after market wiper blade and find little leakage after assembly, this may be due to the dimension of the after market wiper blade is slightly different from the OEM wiper blade. In this case, you can add some silicon sealant in the position as shown in the photo.



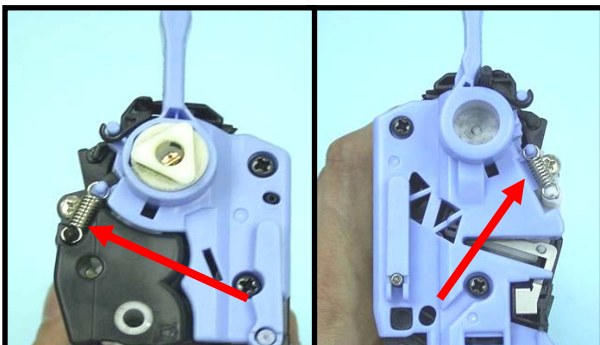
4. Fit the PCR in the pre-assembled PCR saddles in the Waste Section. We suggest adding conductive grease on the black PCR Saddle and silicon grease on the other saddle. Remember to lubricate the wiper blade. Delacamp recommends yellow toner for this. Lack of lubricant will cause noise and reduce the life of the wiper blade and the OPC drum.



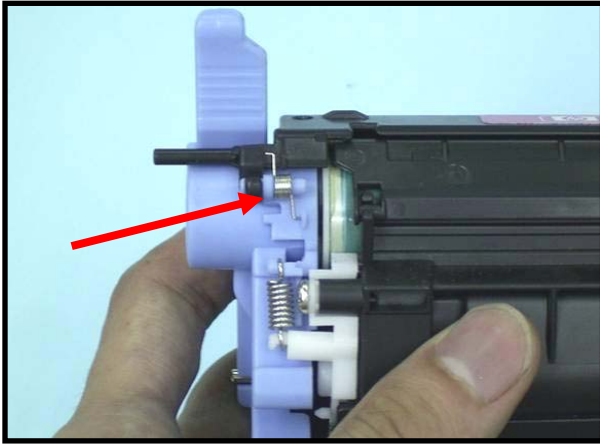
5. Install the OPC drum as shown in the photo. The left end cap is pre-installed, so put the OPC drum into the left end cap, fit the right end cap and secure with the 2 screws provided to the waste section.



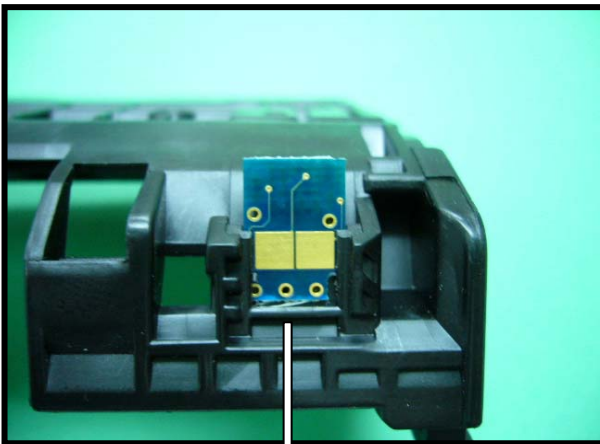
6. Assemble the hopper and waste section by inserting the Plastic pivot pin and Metal Pivot pin as shown in the photo.



7. Insert the Hopper Tension Spring between the hopper and waste section as shown in picture.



8. Take the OPC drum shutter from the OEM cartridge and fit to the Waste Section. Finally, insert the OPC Drum Shutter Spring. A spare spring is included with the kit.



The slot is a tight fit for the chip. Just press the chip into the slot. This picture shows an after market chip which is longer than the OEM chip but can still fit into the Delacamp Waste Section

9. The Delacamp Waste Section chip slot is designed to fit an OEM size chip. However, some after market chips may be bigger than the OEM chip. If the after market chip is longer than OEM chip, you can still slide in the chip as shown in the photo. It may project over the slot but this will not affect the function. If the after market chip shape is really too large and cannot fit into the slot, you may need to use double sided tape to fix the chip. Please make sure the chip is fixed properly, otherwise the cartridge may not work