

Installation Instructions of CC1633 HP P1606/P1566 CONVERSION KIT FROM OEM HP P1505

OEM HP P1505 CARTRIDGE (CB436A)



60238 (CC1633) HP P1606/P1566 CONVERSION KIT FROM OEM HP P1505



These instructions provide the information required to convert an OEM HP P1505 to HP P1606/P1566, by cutting the cartridge and using the Article 60238 (CC1633) HP P1606/P1566 CONVERSION KIT FROM OEM HP P1505.

Article 60238 (CC1633) HP P1606/P1566 CONVERSION KIT FROM OEM HP P1505 will soon be available and includes the follows parts (**all items are currently available separately!):

1. 60229 (CC1614) HP P1606/P1566 DRUM BEARING PLATE
2. 60230 (CC1615) HP P1102/P1606/P1566 UNIVERSAL END CAP
3. 60227 (CC1616) CARTRIDGE STABILIZER HP P1505 TO HP P1606/P1566 CONVERSION

The following other products are required (**need to be purchased separately):

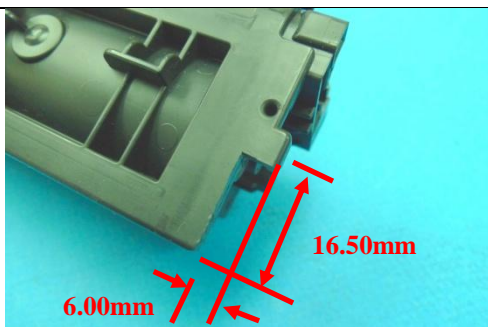
- 60228 (CC1613) HP P1606/P1566 DRUM BEARING PLATE
- 60230 (CC1615) HP P1102/P1566/P1606 UNIVERSAL RIGHT END CAP

Procedures



Step 1

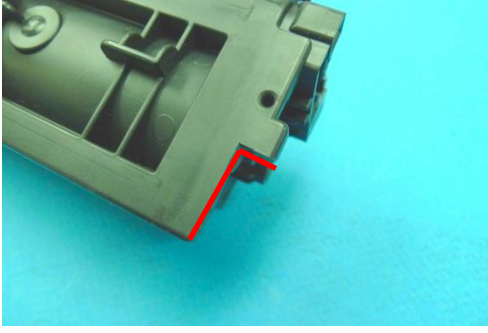
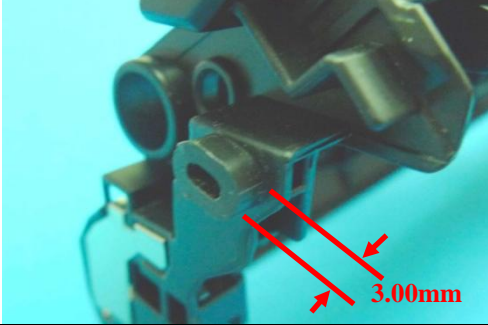

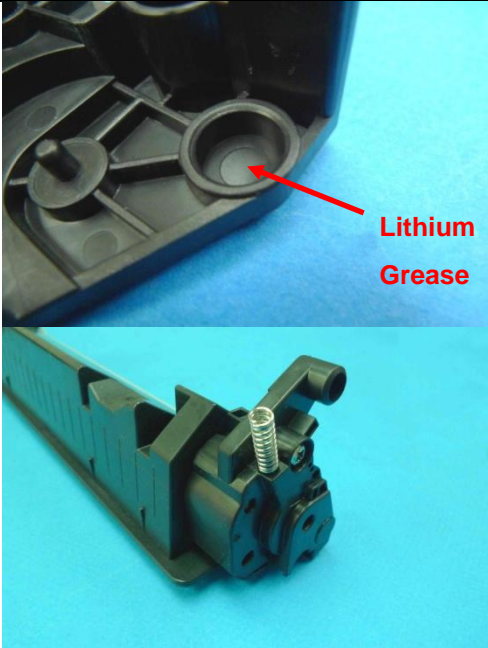
- a.) Unscrew the OEM HP P1505 cartridge's Drum Bearing Plate.
- b.) Separate the Toner Hopper Section and Waste Toner Hopper Section into their preassembled parts.
- c.) Take out the Mag Roller, Left and Right Mag Roller Bushes, Left and Right Mag Roller Wipers, Gear Set, Left End Cap, Doctor Blade from the OEM HP P1505 Toner Hopper Section. Take out the OPC Drum, PCR, Wiper Blade from the OEM HP P1505 Waste Toner Hopper Section. Clean all parts.

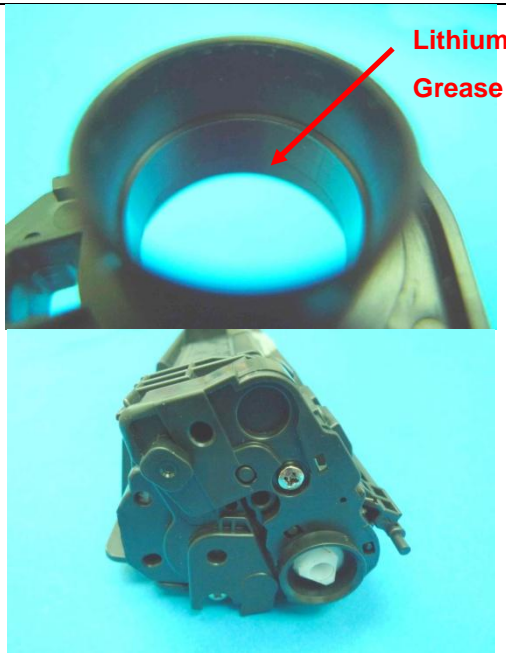


Step 2

Cut a small strip from the Left Side of the HP P1505 Toner Hopper, to the dimensions as shown in photo on the left.

****If this small strip is not removed, then the cartridge will be prevented from fitting into the HP P1606/P1566 printer.**

	<p style="text-align: center;"><u>Step 3</u></p> <p>Cutting away this strip has probably opened up the joint line of the hopper. Therefore it is essential to apply some polystyrene glue or solvent on the cut section to reseal the hopper as shown in the photo, to prevent toner leakage.</p>
	<p style="text-align: center;"><u>Step 4</u></p> <p>Reduce the height of the stabilizer on the left hand side of the cartridge by cutting or machining, to the dimension shown in the photo on the left. This height of the cut down stabilizer is important as it locates the new stabilizer.</p>
	<p style="text-align: center;"><u>Step 5</u></p> <p>Glue the new 60227 (CC1616) CARTRIDGE STABILIZER HP P1505 TO HP P1606/P1566 CONVERSION on top of the existing cartridge stabilizer, as shown in the photo on the left. The shape of the new stabilizer locates it in the correct position.</p> <p>**If this new Stabilizer is not added, although the cartridge will work, it will not be stable inside the HP P1606/P1566 printer and lead to paper jams and print defects. It is essential that the new stabilizer is added.</p>
	<p style="text-align: center;"><u>Step 6</u></p> <p>Refill and seal the Toner Hopper, reassemble the Mag Roller, Left and Right Mag Roller Bushes, Left and Right Mag Roller Wipers, Gear Set, Left End Cap, Doctor Blade back onto the Toner Hopper Section. It is very important that some High Temperature Lithium Grease is added to the hole, which pointed at the photo, of the 60230 (CC1615) HP P1102/P1606/P1566 UNIVERSAL END CAP, otherwise premature wear of the end cap will occur.</p> <p>Then assemble and screw the new 60230 (CC1615) HP P1102/P1606/P1566 UNIVERSAL END CAP onto the Toner Hopper Section.</p>



Step 7

Reassemble the OPC Drum, PCR, Wiper Blade back onto the Waste Toner Hopper Section. Place the Waste Toner Hopper Section in the correct position on the top of the Toner Hopper Section. It is very important that some High Temperature Lithium Grease is added to the hole, which pointed at the photo, of the 60228 (CC1613) HP P1606/P1566 DRUM BEARING PLATE, otherwise premature wear of the bearing plate will occur.

Then assemble and screw the new 60229 (CC1614) HP P1606/P1566 DRUM BEARING PLATE onto the cartridge.

The installation is now complete.